

Whirlpool



WDFS3R4OIXAU  
WDFS3R4OBSAU  
WDFS3R4OWEAU

DAILY REFERENCE GUIDE

## Table of Contents

|                             |    |
|-----------------------------|----|
| Daily reference guide ..... | 3  |
| Control Panel .....         | 3  |
| Product Description.....    | 3  |
| First Time Use .....        | 4  |
| Loading the Racks .....     | 6  |
| Programs Table .....        | 9  |
| Care and Maintenance .....  | 10 |
| Installation .....          | 12 |
| Troubleshooting .....       | 14 |
| Product Specification ..... | 16 |



**THANK YOU FOR BUYING A WHIRLPOOL PRODUCT.**  
In order to receive a more complete assistance, please register your appliance on: [whirlpool.com.au](http://whirlpool.com.au)

Before using the appliance carefully read  
**Safety and Installation Instructions.** More information about your  
product available on website: [whirlpool.com.au](http://whirlpool.com.au)



After installation, please remember to remove all transport  
protection parts from the dishwasher.

## Control Panel



1. **On/Off button:** To turn on/off the power supply.
2. **Program button:** Press the key to select a suitable program. The corresponding program indicator will be ON. Long press 3s to activate Child Lock function.
3. **Delay button:** Press this button will allow you to delay the start time for up to 24hours.
4. **Program indicator light:** When you select a program, the corresponding light will be ON.
5. **Display:** To display the remaining program time when in operations. Also the set delay time and error code when appliance breakdown.
6. **Closed water tap indicator:** The indicator lights up when water tap is closed.
7. **Rinse aid refill indicator:** The indicator lights up when rinse aid needs to be refilled.
8. **Upper Zone wash indicator:** When the function of only upper spray arm operating is activated, this indicator will be ON.

9. **Natural Dry:** The indicator will be ON when Natural Dry function is activated.
10. **Lower Zone wash indicator:** When the function of only lower spray arm operating is activated, this Indicator will be ON.
11. **Child Lock indicator:** The indicator will be ON when Child Lock function is activated. The indicator will flash for 6 times and remains ON afterwards.
12. **Natural Dry button:** Press this button to activate or deactivate the Natural Dry function, this drying system will automatically opens the door during/after the drying phase.
13. **Function button:** Press this button to activate or deactivate the function of Upper/ Lower Zone wash.
14. **Start/Pause button:** Press the button once to start and press again to pause a program.

## Product Description



- 1 Upper Rack
- 2 Spray Arms
- 3 Lower Rack
- 4 Detergent Dispenser
- 5 Rinse Aid Dispenser
- 6 Cutlery Rack
- 7 Cup Holders
- 8 Filters

## First Time Use

Before using your dishwasher for the first time:

- Fill the rinse aid dispenser
- Choose the right detergent and fill the dispenser

### A. Fill the Rinse Aid Dispenser

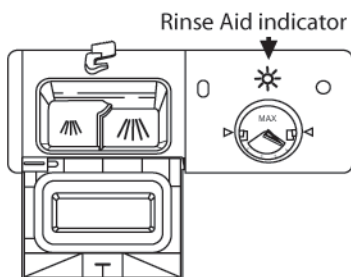
Rinse aid is automatically added during the last rinse, ensuring thorough rinsing, spotless and streak free drying.

#### Caution!

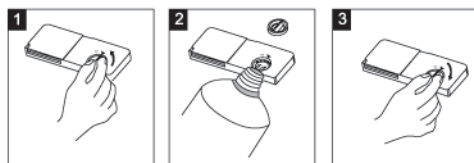
Only use rinse aid for dishwasher. Never fill the rinse aid dispenser with any other substances (e.g. dishwasher cleaning agent, liquid detergent). This would damage the appliance.

### When to Refill the Dispenser

Visualize and determine the amount of rinse aid by the colour of the optical level indicator "D" located next to the dispenser lid. When the dispenser is full, the whole indicator will be darkened. As the rinse aid diminishes, the size of the dark dot decreases. Refill the dispenser when it is around or below 1/4 full. When the dispenser is empty, the rinse aid refill indicator will light up. Refill the dispenser immediately.



### How to Fill the Dispenser



- Remove the dispenser lid by turning it to the "Open" arrow.
- Pour the rinse aid into the dispenser, be careful not to overflow.
- Close the lid tightly by turning it to the "Close" arrow.

The rinse aid is released during the last rinse to help prevent water spots and streaks, making dish drying easier. The dispenser capacity is around 140ml.

Your dishwashers are designed to use liquid rinse aids. The rinse aid dispenser is located inside the door next to the detergent dispenser.

#### Caution!

Clean up any rinse aid spill during pouring immediately with a dry cloth.

### Adjusting the dosage of rinse aid

The rinse aid dispenser has four settings. The default setting is "4". If you are not completely satisfied with the drying results, you can adjust the quantity of rinse aid used by rotating the dial as shown below.

**NOTE:** If there are water droplets or lime spots after washing, set a higher number. If you see bluish or sticky whitish streaks on dishes, set a lower number.



Adjust lever (Rinse aid)

## B. Choose the right detergent and fill the dispenser

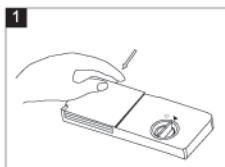
Use only detergents designed for dishwashers, failure to do so may cause malfunction or damage to the appliance.

### Concentrated Detergent

Based on their chemical composition, dishwasher can be classified into two basic types:

- conventional, alkaline detergents
- low alkaline concentrated detergents with natural enzymes

We recommend the use of concentrated detergents with "Eco" program which is an environmentally friendly program. The "Eco" program is designed to ideally work with the enzyme in concentrated detergents maximizing cleaning performances.



### NOTE:

1. If the lid is closed: Press the release button and pull up the tab on the lid.
2. Always add the detergent just before starting of each program. Otherwise detergents might get damp and could not dissolve properly during operations.

### ⚠ WARNING!

Dishwasher detergents are strongly alkaline. They can be extremely dangerous if swallowed. Avoid contact with the skin and eyes and keep children away from the dishwasher when the door is open.

### Multifunctional Tablets

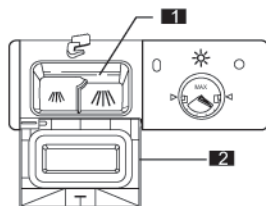
Tablets are not recommended for use of Rapid cycle. If the tablets are used, it may cause detergent residue on dishes due to short program time and tablets might not completely dissolve during the operations.

### How to Fill the Dispenser

The dispenser must be filled before operating each program, follow the instructions provided in Programs Table section. In general, only one tablespoon of detergent is needed for a normal wash load. Also, more heavily soiled items might need more detergents.

The marking indicates the dosing levels, follow the below instructions for filling detergents.

1. Place the detergents for main wash here.
2. Place the detergents for prewash directly inside the tub instead of the dispenser, we recommend to place a maximum of approximately 5g of detergents for prewash. Please observe the manufacturer's dosing and storage recommendations as stated on the detergent packaging. Close the lid and press until it locks in place.



Add detergents in the tub for enhanced washing performance at prewash phase. This detergent will take effect during the prewash phase.

#### NOTE:

1. Hold the Function button for 3s while in operations to reset the appliance: the operation will stop and appliance will force drain.
2. Except Prewash and Rapid programs, all wash programs are compatible with tablets.

## Loading the Racks

For best performance of the dishwasher, follow these loading guidelines. Features and outlook of the racks may vary from your model.

### Attention points before and after loading

1. Remove all food residues from the crockery and empty the glasses. It is not necessary to rinse the dishes under running water. Place dishes according to below tips:

A. Items such as cups, glasses, pots/pans, etc, are to place upside down.

B. Concave/convex parts of dishes are to place obliquely, allowing water to reach every surface and flow freely.

C. Dishes are stacked securely and cannot tip over.

D. Dishes do not prevent the spray arms from rotating while washing takes place.

2. Very small items should not be washed in the dishwasher as they could easily fall out of the racks.

3. The upper and lower racks cannot be pull out in the same time when loading to prevent racks from tip over.

### Unloading dishes

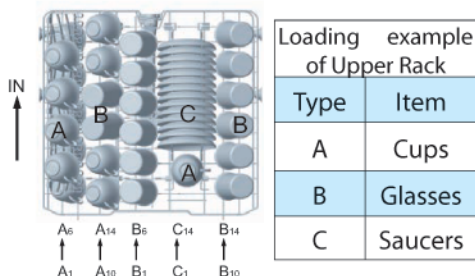
To prevent water dripping from the upper rack into the lower rack, we recommend unloading the lower rack first.

## A. Loading the Upper Rack

The upper basket is designed to hold more delicate and lighter

dishware such as glasses, coffee and tea cups and saucers, as well as plates, small bowls and shallow pans.

Position the dishes and cookware to avoid interferences with the spray arm.



## B. Adjusting the Upper Rack

If required, the height of the upper rack can be adjusted in order to create more spaces for large items either in the upper or lower rack. The upper rack can be adjusted by inserting the wheels of the rack into the rails in dishwasher tub on the desired position.

Long items, serving cutlery, salad servers or knives should be placed on the cutlery rack so that they do not obstruct the rotation of the spray arms. The rack can be folded back or removed when not required for use.

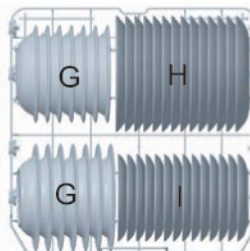




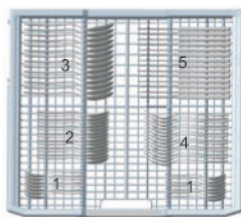
## C. Loading the Lower Rack

We recommend that you place large items in the lower rack: pots, pans, lids, serving dishes and bowls, as shown in the loading example below.

It is preferable to place serving dishes and lids on the side of the rack to avoid interferences with the spray arm. Items such as pots, serving bowls must always be placed upside down. Deep pots should be placed obliquely, allowing water to reach every surface and flow freely. The bottom rack has tip-up supports so that larger or more pots and pans can be loaded.



| Loading example of Lower Rack |                |
|-------------------------------|----------------|
| Type                          | Item           |
| G                             | Soup plates    |
| H                             | Dinner Plates  |
| I                             | Dessert plates |



| Loading example of Cutlery Rack |                |
|---------------------------------|----------------|
| Type                            | Item           |
| 1                               | Tea spoons     |
| 2                               | Dessert spoons |
| 3                               | Soup spoons    |
| 4                               | Forks          |
| 5                               | Knives         |



### Unsuitable items to put into dishwasher

- Wooden crockery and cutlery.
- Delicately decorated glasses, artistic handicrafts and antique crockery. Their decorations are not resistant.
- Parts in synthetic material which do not withstand high temperatures.
- Copper and tin crockery.
- Crockery soiled with ash, wax, lubricating grease or ink.

### ⚠ WARNING!

Do not let any item extend through bottom of the dishwasher tub.

Some types of glasses can become dull after a large number of washes.

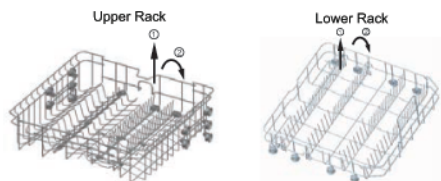
The colours of glass decorations and aluminium/silver pieces can change and fade during the washing process. Some types of glass (e.g. crystal objects) can become opaque after a number of washes too.

**NOTE:** Do not put in items that are soiled with cigarette ash, candle wax, lacquer or paint. When you purchase new dishes please make sure that they are suitable for dishwashers.

**NOTE:** Please do not overload your dishwasher. This appliance is equipped for 14 place settings. Do not load dishes that are not suitable for dishwashers. This is important for optimizing washing performances and maintaining energy efficiency.

### Tip-up supports

Both upper and lower racks have tip-up supports that can be used in a vertical position. It allows to flexibly load different type of dishes. In the upper rack, you can flexibility arrange tea/dessert saucers or in a lower position to load bowls and food containers. In the lower rack, you can flexibility arrange plates or in a horizontal position (lower) to load pans and salad bowls easily.



## D. Loading the Cutlery Rack

Arrange the cutleries as shown. Cutleries should be placed to ensure that water flows freely.

## Other Loading suggestions

Load items such as cups, glasses, pans etc. with upside down position to allow water to flow freely.

Dishes and items of cutleries shall not be placed or stacked together, to avoid affecting washing performance

Load glasses carefully to avoid breaking them. Only use glasses and porcelain guaranteed by the manufacturer as dishwasher safe.

Select a program with low temperature whenever possible.

To prevent damages, unload glasses and cutleries once the program finishes.

## Caution!

Long bladed knives stored in an upright position is a potential hazard! Long and/or sharp items of cutlery such as carving knives must be positioned horizontally with the blades facing downwards in the cutlery rack. Damages to glasses or other dishes might be caused by:

- Type of glass or the chemical composition of the detergents.
- Water temperature is too high and/or duration of program is too long.

---

## At the End of the Wash

When the program has finished, the buzzer sounds for 6 times. Turn off the appliance by pressing the "On/Off" button, then close the water tap and open the door of the dishwasher. Wait a few minutes before unloading the dishwasher to avoid handling dishes that are still hot and more susceptible to breakage.





Make sure that the water supply is turned on to full pressure. Close the door, press the "On/Off" button and then the "Program" button to select a desired program (Refer to "Programs Table" section).

**NOTE:** You should heard a "Click" sound when the door is closed.

When the program has finished, the display will shows "—" and the buzzer will sound for 6 times, you can shut off the appliance by pressing the "On/Off" button. Then turn off the water tap.

### Changing a Running Program

A running program could only be modified if it has only been running for a short time. Otherwise, the detergent may have already been released, and the appliance may have already drained the wash water. If that happens, the detergent dispenser must be refilled (Refer to "First Time Use" section).

Press the "On/Off" button twice to turn appliance off and back on. Then, press the "Program" button to choose the desired program.

**NOTE:** If you open the door when the washing program underway, the appliance will pause and a buzzer will sound, the display appears E1. Please close the door and press "Start/Pause" button to continue operations.

The program indicator light will show following status of the dishwasher:

- a) One of the program light on: program running
- b) One of the program light flashing: program pausing

**NOTE:** If all the lights begin to glimmer, that indicates the machine with malfunction, please turn off the appliance and water supply before calling a service.

### Add Extra Dish

A forgotten dish can be added any time before the detergent dispenser lid opens.

1. Open the door a bit to pause the program.
2. After the spray arms stop working, you can open the door completely.
3. Add the dish.
4. Close the door, and press the "Start/Pause" button to continue the program.

### WARNING!

It is dangerous to open the door when washing, be aware of the hot water and steam. We recommend to avoid opening the door when washing whenever possible.

Open the door carefully at all times. Hot steam may escape when the door is opened!

### Unloading the Dishwasher

Hot dishes are sensitive to knocks. The dishes should therefore be allowed to cool down for around 15 minutes before unloading.

Open the dishwasher door, leave it ajar and wait for a few minutes before removing the dishes. This helps to cool down the loading and thus avoiding burns.

It is normal that the dishwasher will be wet inside after program. Unload the racks, beginning with the lower rack.

## Care and Maintenance

### Cleaning the Filter

The filter is used to trap and remove food residues from the washing water and then recirculate the water. Be sure to regularly clean the filter assembly.

### The Filter Assembly

The filter assembly consists of a Stainless steel plate filter (1), a Cup filter (2) and a Cylindrical filter (3).

(1) Stainless steel plate filter  
Food residues will be trapped by a special jet on the lower spray arm.

(2) Cup filter

Big food residues such as bones will be trapped in this filter.

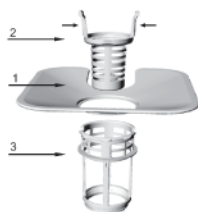
To remove an item trapped in this filter, gently squeeze the taps on the top of this filter to lift it up and clean the filter.

### (3) Cylindrical filter

This filter holds soils and food residues in the base of the tub and prevents it from being recirculated onto the dishes during washing.

- Check and inspect the filters to make sure no blockage every time the dishwasher has been used.

- By unscrewing the Cup filter, you could remove the filter assembly. Remove any residues and clean the filters under running water.



Step 1: Turn the Cup filter anti-clockwise, and then lift it up;

Step 2: Lift the Stainless steel plate filter up

**Follow the above steps to remove the filter assembly and do cleaning; work vice versa to reinstall the assembly after cleaning.**

For best performance and results, the filter assembly must be cleaned. The filter efficiently removes food particles from the wash water, allowing it to be recirculated during the program. We recommend to remove the larger food residues trapped in the filter after each wash program by rinsing the filter assembly under running water. The entire filter assembly should be cleaned once a week. Alternatively you could also use a brush to clean the Cup filter and Cylindrical filter.

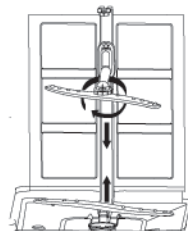
The dishwasher must never be used without the filters. Improper placement or loosely attached filter assembly will affect the performance of the appliance and damage dishes and utensils.

### ⚠ WARNING!

Never run the dishwasher without the filters in place. Carefully clean the filters and avoid bending or deforming them.

### Cleaning the Spray Arms

It is necessary to clean the spray arms regularly for clearing food or chemical residues that might clog the spray arm jets and bearings. To remove the spray arms, screw off the nut clockwise. Wash them under soapy and warm water and use a soft brush to clean them. Reinstall after rinsing thoroughly.



### Caring for the Dishwasher

To clean the control panel, or the outer parts of the appliance, use a soft damp cloth and dry thoroughly afterwards.

Never use sharp objects, glass or general purpose cleaners, scouring powder or similar to do cleaning.

### Protection against Frost

If your dishwasher is placed in surroundings exposed to the risk of frost, especially in winter, follow the below instructions to protect the appliance against frost:

1. Cut off electrical power of the appliance.
2. Turn off the water supply and disconnect the water hoses.
3. Drain all water out.  
(Use a pan to catch the water)
4. Remove the filter assembly and use a sponge to clear the residue water at the base of the tub.

## Cleaning the Door

To clean the edge around the door, you should use only a soft, warm, damp cloth. To prevent water spilling into the door lock and electrical components, do not use any spray cleaners. Also, never use abrasive cleaners or scouring powder on the outer surfaces because they will damage the surface finishing. Some paper towels can also damage or leave marks on the surfaces.

## Advices and Tips

### After Every Wash

After every wash, turn off the water tap and leave the door slightly ajar so that moisture and odors are not trapped inside.

### Remove the Plug

Before cleaning or performing maintenance, always remove the plug from the socket to avoid any electrical shock risk.

### No Solvents or Abrasive Cleaners

To clean the exterior and rubber parts of the appliance, do not use any solvents or abrasive cleaners. Use only a cloth and warm soapy water. To remove spots or stains from the surface of the interior, use a soft damp cloth with a little white vinegar, or a cleaning product made specifically for dishwashers.

### When you go on Holiday

When you go on holiday, it is recommended that you run a program with the dishwasher empty and then remove the plug from the socket, turn off the water tap and leave the door of the appliance slightly ajar. This will help with the maintenance of the door sealing and prevent odors from forming in the appliance.

### Moving the Appliance

If the appliance must be moved, keep it in the vertical position. If absolutely necessary, you could also carefully lay it down with the appliance front facing up.

## Plastic Sealing

One of the factors that cause odors to form in the dishwasher is food residue trapped in the plastic sealing surrounding the tub. Periodic cleaning with a damp sponge will prevent this.

## Installation

### ⚠ WARNING!

The installation of the pipes and electrical equipments should be done by professionals.

### ⚠ WARNING!



Electrical Shock Hazard!

Disconnect electrical power before installing dishwasher.

Failure to do so can result in death or electrical shock.

- Keep this instruction manual in a safe place for future reference. If the appliance is sold, given away or moved, please ensure the manual keep with the appliance, so that the new owner may benefit from the advises given.

- Please read this instruction manual carefully: it contains important information regarding the safe installation, use and maintenance of the appliance.

- If the appliance must be moved at any time, keep it in an upright position.

### Positioning and leveling

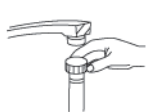
1. Unpack the appliance and remove all packaging, and check that it has not been damaged during transportation. In the event of problems, contact the dealer or your nearest After-sales Service.
2. Check the dishwasher by placing it so that its sides or back panels are in contact with the adjacent cabinets or even with the wall. This appliance can also be recessed under a single worktop (Refer to the separate Installation Guideline).

3. Position the dishwasher on a level and sturdy floor. If the floor is uneven, the front feet of the appliance may be adjusted until the appliance is levelled (the angle of inclination must not exceed 2 degrees). If the appliance is levelled correctly, it will be more stable and avoid vibrations and noises during operation.

### Water and Electrical Connections

- Water and electrical connections should only be performed by a qualified technician.
- Water hoses or power cord should not be crushed by the appliance.
- The appliance must be connected to the water supply using only new hose sets. The old hose sets should not be reused.

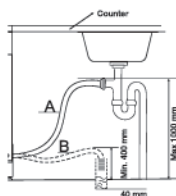
### Connecting the Water Inlet Hose



Connect the cold water supply hose to a threaded 3/4(inch) connector and make sure that it is tighten firmly without any leakage.

If the water hoses are new or have not been used for a period of time, turn on the water tap and let water run for a while to make sure that the water is clear and free of impurities. If this precaution is not taken, there is a risk that the water inlet can get blocked and the appliance could be damaged.

### Connecting the Water Drain Hose



Insert the drain hose into a drain pipe with a minimum diameter of 4cm, or let it run into the sink, making sure to avoid bending. The top of the hose must be at a position with height between 40-100cm.

The free end of the hose must not be immersed in water to avoid siphoning.

If the length of the hose is not long enough, contact the dealer or your nearest After-sales Service. The maximum allowed length of drain hose is 4m for the appliance to operate normally. Secure the drain hose firmly to the drainage pipe so it would not come off during the operation.

### Electrical Connection

Before inserting the plug into the electrical socket, make sure that:

- the socket is earthed and in compliance with local regulations;
- the socket can withstand the maximum power of the appliance, which is indicated on the Rating Plate located on the side of appliance door.
- the supply voltage falls within the values indicated on the Rating Plate located on the side of appliance door.
- the socket is compatible with the plug of the appliance. In the event of problems, contact a qualified technician for assistance; do not use extension cables or multiple sockets.

**!** Once the appliance has been installed, the power cord and the electrical socket should be easily accessible.

**!** The cable should not be bent or compressed.

**!** If the power cord is damaged, it must be replaced by a qualified technician to prevent potential hazards.

**!** Non-professional repairs, maintenance not authorized by the manufacturer could result in a risk to health and safety, for which the manufacturer cannot be held liable.

### Advice before Running the First program

After the appliance has been installed, immediately before running the first program, fill in the rinse aid dispenser (Refer to "First Time Use" section).

### Positioning the Appliance

Position the appliance in the desired location. The back should rest against the wall behind it, and the sides along the adjacent cabinets or wall. The dishwasher is equipped with water supply and drain hoses that can be positioned to the right or the left to facilitate proper installation.

### Leveling the Appliance

Once the appliance is positioned, adjust the feet (by screwing them) to adjust the height of the dishwasher, making it level. In any case, the appliance inclination must not exceed 2 degrees.

**NOTE:** The maximum adjustment height of the feet is 2cm.

### How to Drain Excess Water From Hoses

If the sink is 100cm higher from the floor, the excess water in hoses cannot be drained directly into the sink. It will be necessary to drain excess water from hoses into a suitable container that is held outside and lower than the sink.

### Avoid Water Leakages

The drain hose must be securely tighten to avoid water leakages.  
Ensure that the water inlet hose is not kinked or bent.

### Avoid Siphoning

The water connection must be at a height between 40cm (minimum) to 100cm (maximum) from the floor to avoid siphoning. The water drain hose should be fixed by a hoseclip.

### Checklist before Usage

The followings should be checked before start operating the dishwasher:

1. Whether the dishwasher is levelled and fixed.
2. Whether the inlet valve is opened.
3. Whether there is leakage at the water connections.
4. Whether the wires are tightly connected.
5. Whether the power is switched on.
6. Make sure the inlet and drain hoses are not knotted.
7. All packaging materials and the documentation bag should be taken out from the dishwasher.

### Caution!

After installation, please put this manual into the documentation bag and keep it properly. The content of this manual is very helpful to the users.

## Troubleshooting

### Error codes

When malfunction happens, the appliance will display error codes.

| Error Code | Description        | Possible Causes                                      |
|------------|--------------------|--|
| E1         | Door Opened        | The door is opened when the dishwasher is operating. |
| E2         | No Water           | Water inlet malfunction                              |
| E4         | Temperature Sensor | Temperature sensor malfunction.                      |
| E6         | Water Leakage      | Water leakage occurs.                                |
| E7         | Heating Element    | Abnormal heating occurs.                             |



### WARNING!

If overflow occurs, turn off the main water supply before calling a service. If there is water in the base because of an overflow or a small leakage, the water should be removed before restarting the dishwasher.

Service technician must wear protective gloves before disassembling the machine for repairs.



## Troubleshooting (Cont.)

**In case your dishwasher doesn't work properly, check if the problem can be solved by going through the following list.**

| Problem   | Possible Causes  | Solutions   |
|---|--|---|
| The dishwasher does not start   | Fuse blown, or the circuit breaker tripped   | Replace fuse or reset circuit breaker. Remove any other appliances sharing the same circuit with the dishwasher.  |
|   | Power outage   | Make sure the dishwasher is turned on and the door is closed securely. Make sure the power cord is properly plugged into the socket.  |
|   | Water pressure is low  | Check that the water supply is connected properly and the water tap is turned on.   |
| Drain pump keeps operating  | Overflow happens   | The system is designed to detect an overflow. When overflow happens, it shuts off the circulation pump and turns on the drain pump.   |
| The dishwasher makes excessive noise                                    | Some audible sounds are normal   | There might be sounds during operations when detergent lid opens automatically.   |
|   | Dishes are not securely placed in racks or small objects has dropped into the racks  | To ensure loadings are placed securely in the dishwasher.   |
|   | Motor sounds   | Dishwasher has not been used regularly. If you do not use it often, we recommend to run a quick program to let the dishwasher fills in water and drains for maintenance.  |
| An excessive amount of foam is present                                  | Improper detergent is being used   | Use only detergents designed for dishwashers. If there are excessive foams, open the dishwasher and let the foams evaporate. Add 1 gallon of cold water to the tub. Close and start the dishwasher by operating "Prewash" cycle to drain out the water. Repeat if necessary.  |
|   | Spilled rinse aid detergents   | Always wipe away rinse aid spills immediately.  |
| Stain found in tub interior   | Detergent with colorant is being used  | Make sure that the detergent is used is without colorant and designed for dishwashers.  |
| The dishes are not clean  | Program selected is too gentle<br>Dish loading is improper   | Select an appropriate program (Refer to "Programs Table"). Make sure that the action of the detergent dispenser and spray arms rotations are not blocked by large dishware.   |
| Dishes and glasses are covered with limescale, spots or a whitish film. | It could be due to following reasons:<br>1. Extremely hard water<br>2. Low inlet temperature<br>3. Overloading the dishwasher<br>4. Improper loading<br>5. Damp powder detergent<br>6. Empty Rinse Aid dispenser<br>7. Incorrect dosage of detergent | To remove spots from glasses:<br>1. Unload all dishes.<br>2. Do not add detergent.<br>3. Choose the longest program.<br>4. Start the program and allow it to run for about 18 to 22 minutes, then it will be in the main wash phase.<br>5. Press "Start/Pause" button to pause and open the door, pour 2 cups of white vinegar into the bottom of the dishwasher.<br>6. Close the door and continue to run the program.<br>Repeat the above steps if necessary, and try using 1/4 cup (around 60ml) of citric acid crystals instead of white vinegar. |



|   |  |   |
|---|--|---|
| Cloudiness on glasses                                 | Too much detergents used, especially with soft water | Use less detergent if you have soft water and select a short program to wash glasses and to get them clean.   |
| Yellow or brown film found in tub interior            | Tea or coffee stains residues                        | Using a solution of 1/2 cup of bleach and 3 cups of warm water to remove the stains.<br><b>WARNING!</b><br>You have to wait for 20 minutes after a program finishes to let the heating elements cool down before cleaning interior; otherwise, burns will happen. |
|   | Iron deposits in water                               | Call a water softener company for a professional assistance.  |
| White film found in tub interior                      | Hard water minerals                                  | To clean the interior, use a damp sponge with dishwasher detergent and wear rubber gloves when performing cleaning. Never use any other cleaner than dishwasher detergent to avoid foams forming.   |
| The detergent dispenser lid cannot be closed properly | Clogged detergent residue is blocking the lid area   | Clean the detergent residue.  |
| Detergent left on dispenser lid                       | Dishes block detergent lid                           | Load the dishes properly.   |
| Steam   | Normal phenomenon                                    | There might be some steam coming through the vent during drying and draining phases.  |
| Black or gray marks on dishes                         | Aluminum utensils have rubbed against dishes         | Use a mild abrasive cleaner to clean those marks.   |
| Water staying at the bottom of the tub                | Normal phenomenon                                    | There might be some clean water around the outlet on tub bottom to keep the water seal lubricated.  |
| Leakage occurs  | Rinse aid spills                                     | Be careful not to overfill the rinse aid dispenser. Spilled rinse aid could cause overfoaming and lead to overflowing. Wipe away any spills with a damp cloth.  |
|   | Dishwasher is not placed levelly                     | Make sure the dishwasher is levelled.   |

## Product Specification

|                       |                             |
|-----------------------|-----------------------------|
| Dimension:            | 600(W) x 600(D) x 845(H) mm |
| Rated Voltage:        | 220-240V~50Hz               |
| Water Pressure:       | 0.04 - 1.0MPa               |
| Rated Power:          | 1850W                       |
| Place Setting:        | 14                          |
| Hot Water Connection: | Max 60 °C                   |



Policy and standard documentation and additional product information can be found by:

- Visiting our website: [whirlpool.com.au](http://whirlpool.com.au)
- Using QR Code
- Alternatively, **contact our After-sales Service** (See phone number in the warranty booklet). When contacting our After-sales Service, please state the codes provided on your product's identification plate.

